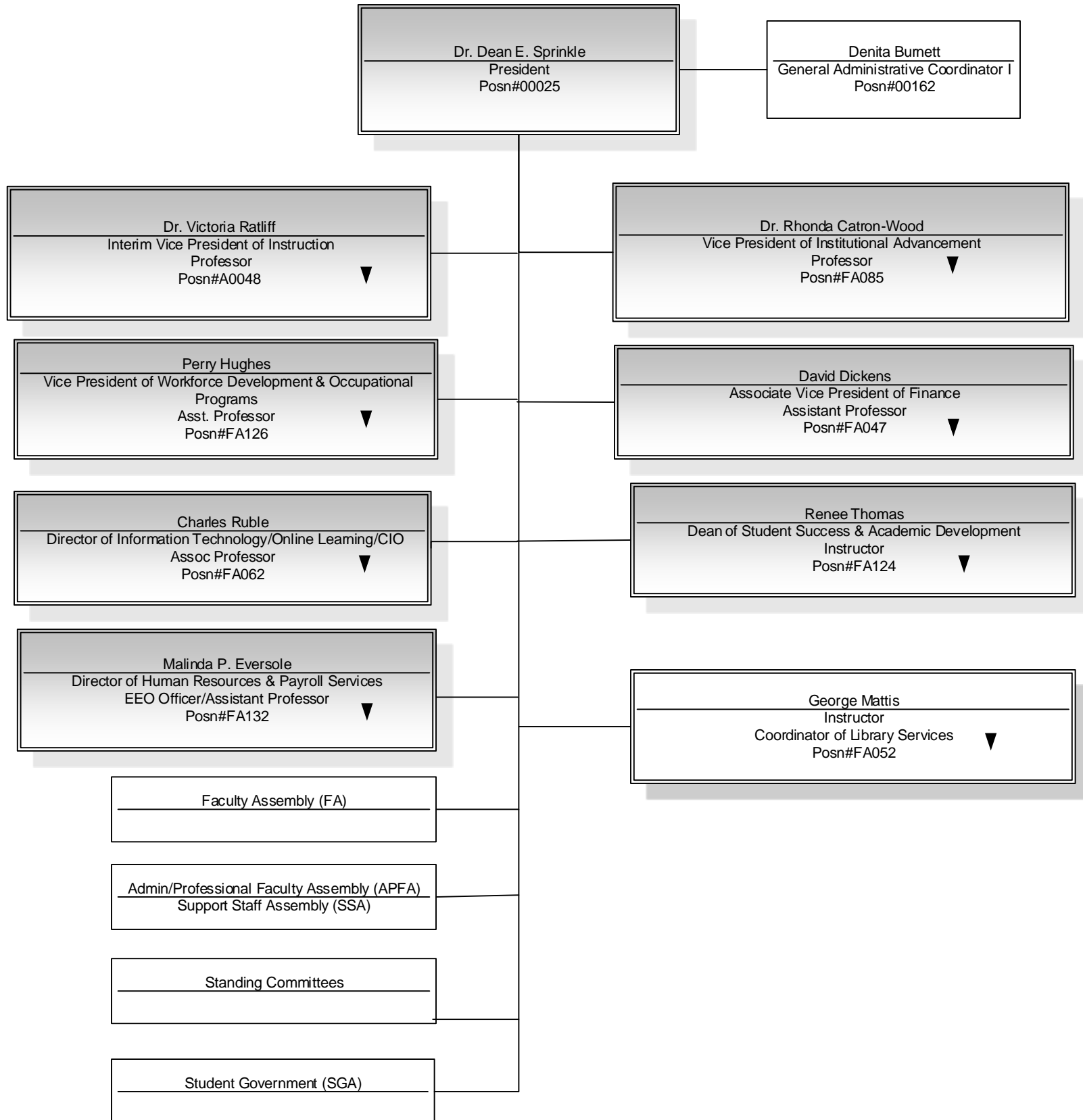


Wytheville Community College Organization Chart

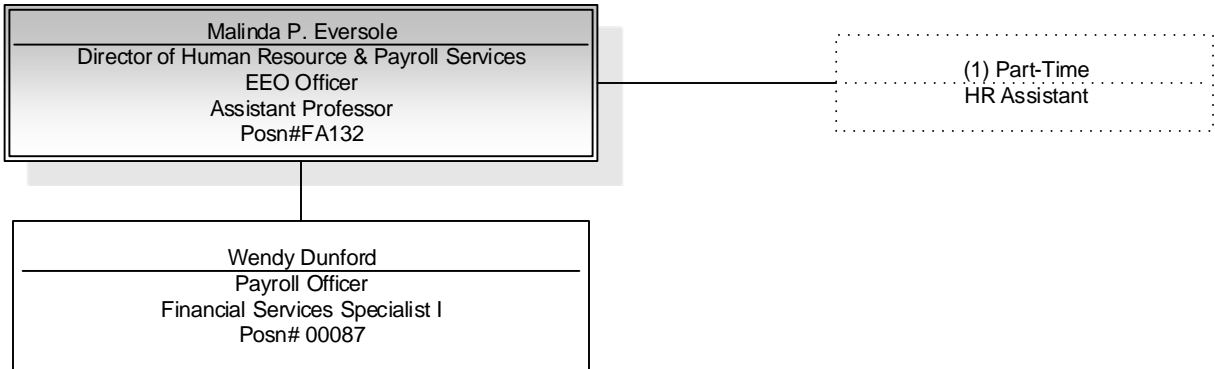
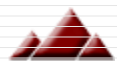
January 3, 2024



Wytheville Community College

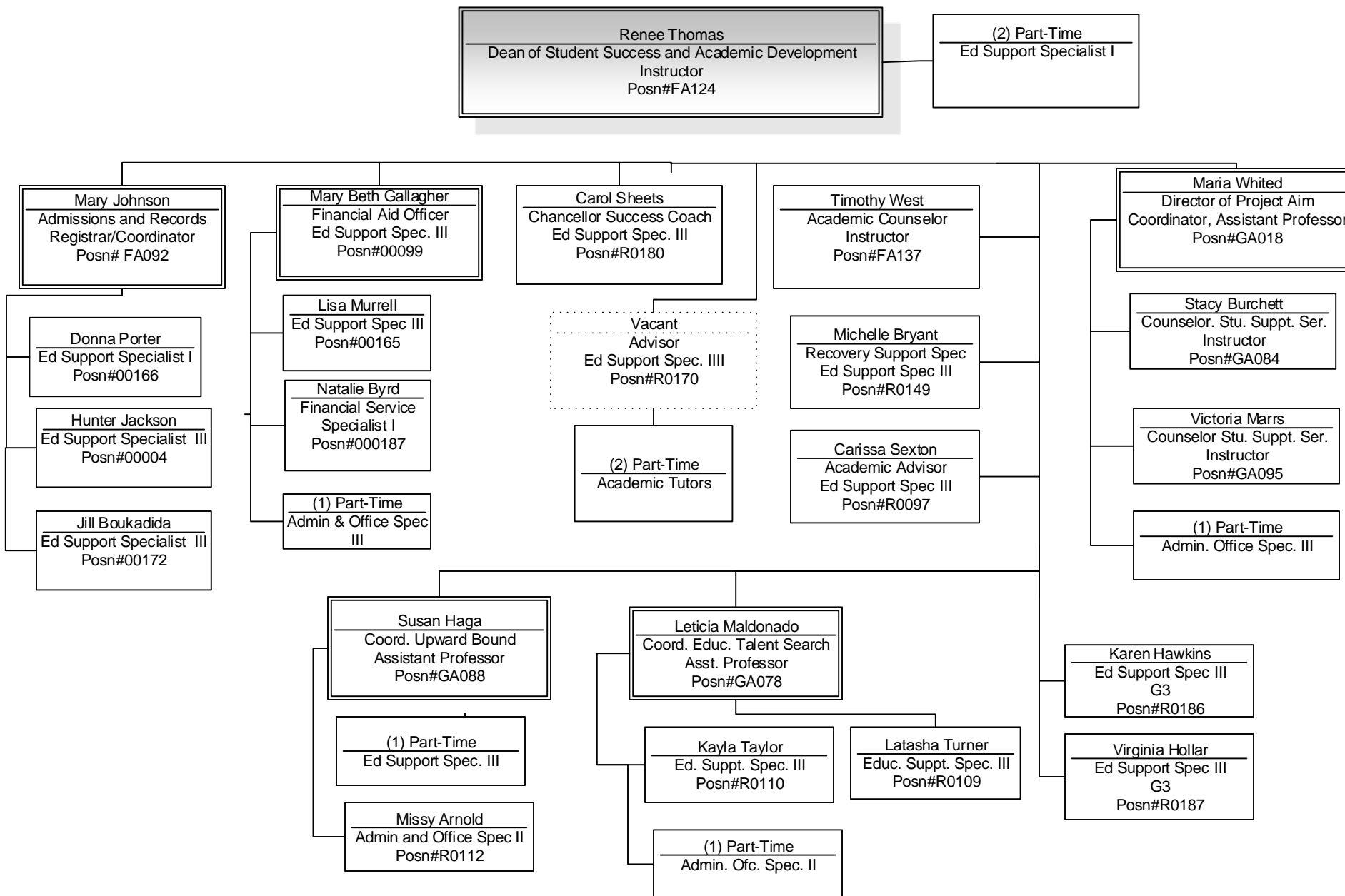
Human Resource & Payroll

January 3, 2024

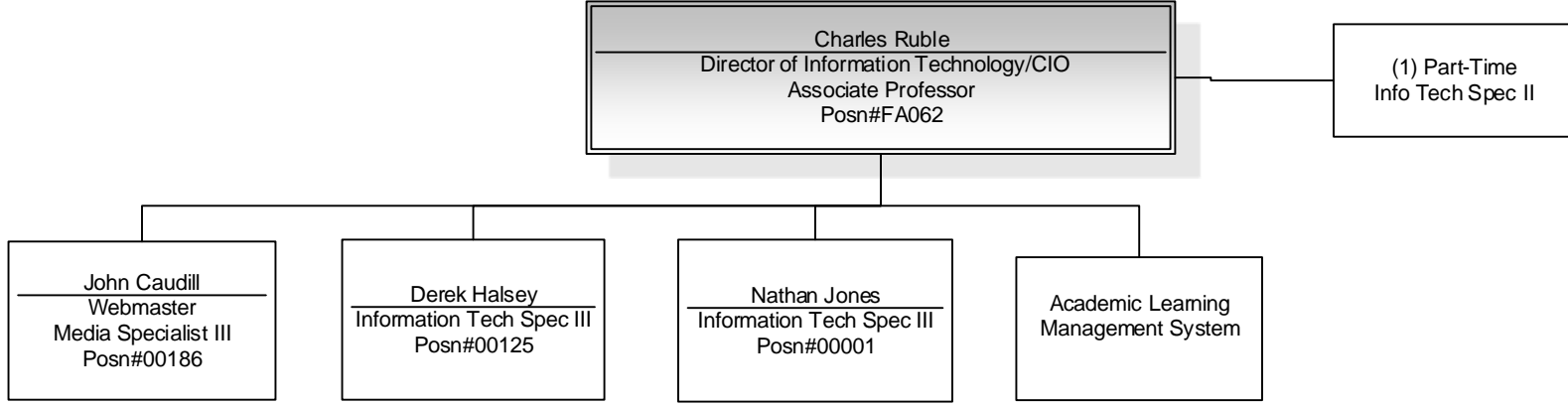
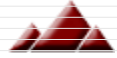




Student Success and Academic Development

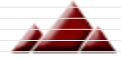


Wytheville Community College Information Technology



Wytheville Community College Library Services

January 3, 2024



George Mattis
Coordinator of Library Services
Instructor
Posn#FA052

(2) Part-Time
Library Assistant

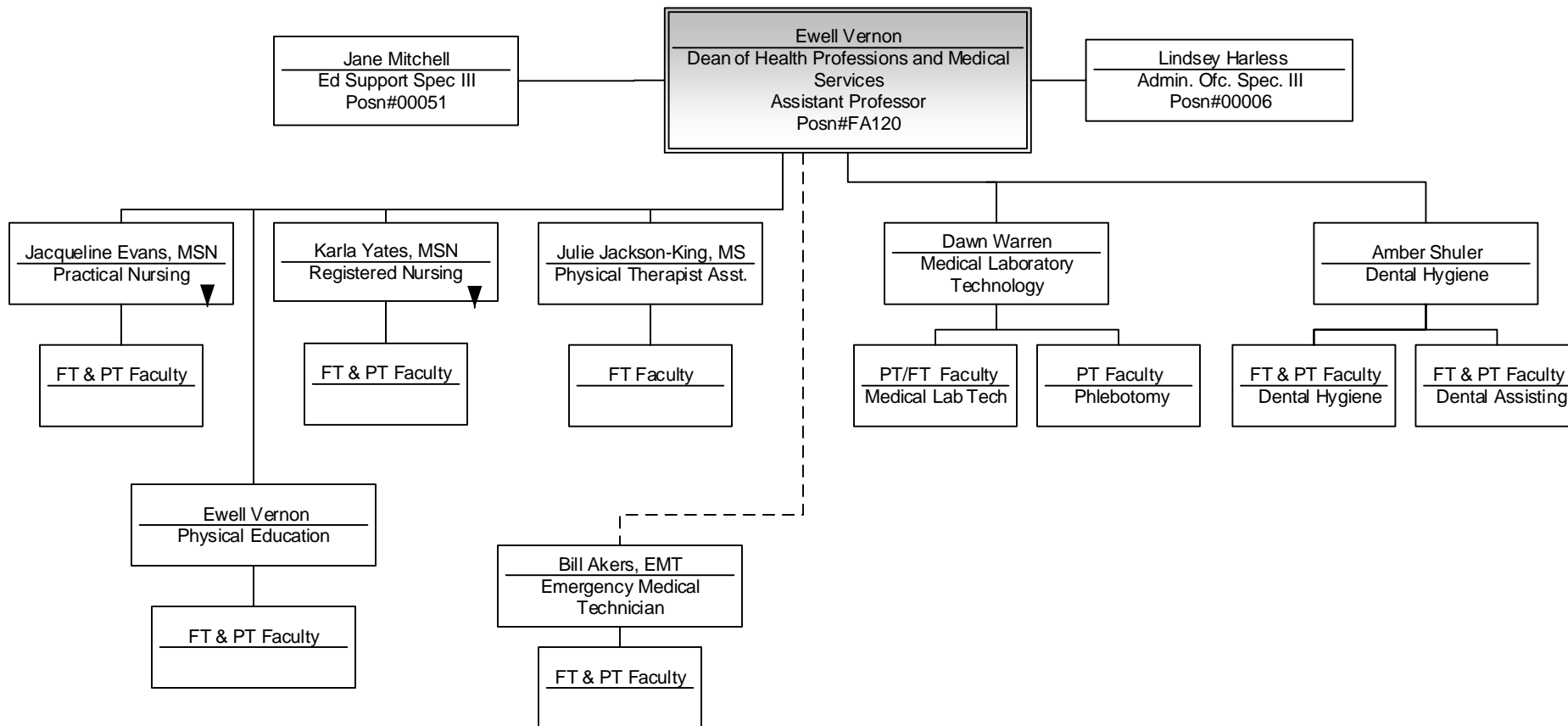


Wytheville Community College

January 3, 2024



Division of Health Professions and Medical Services

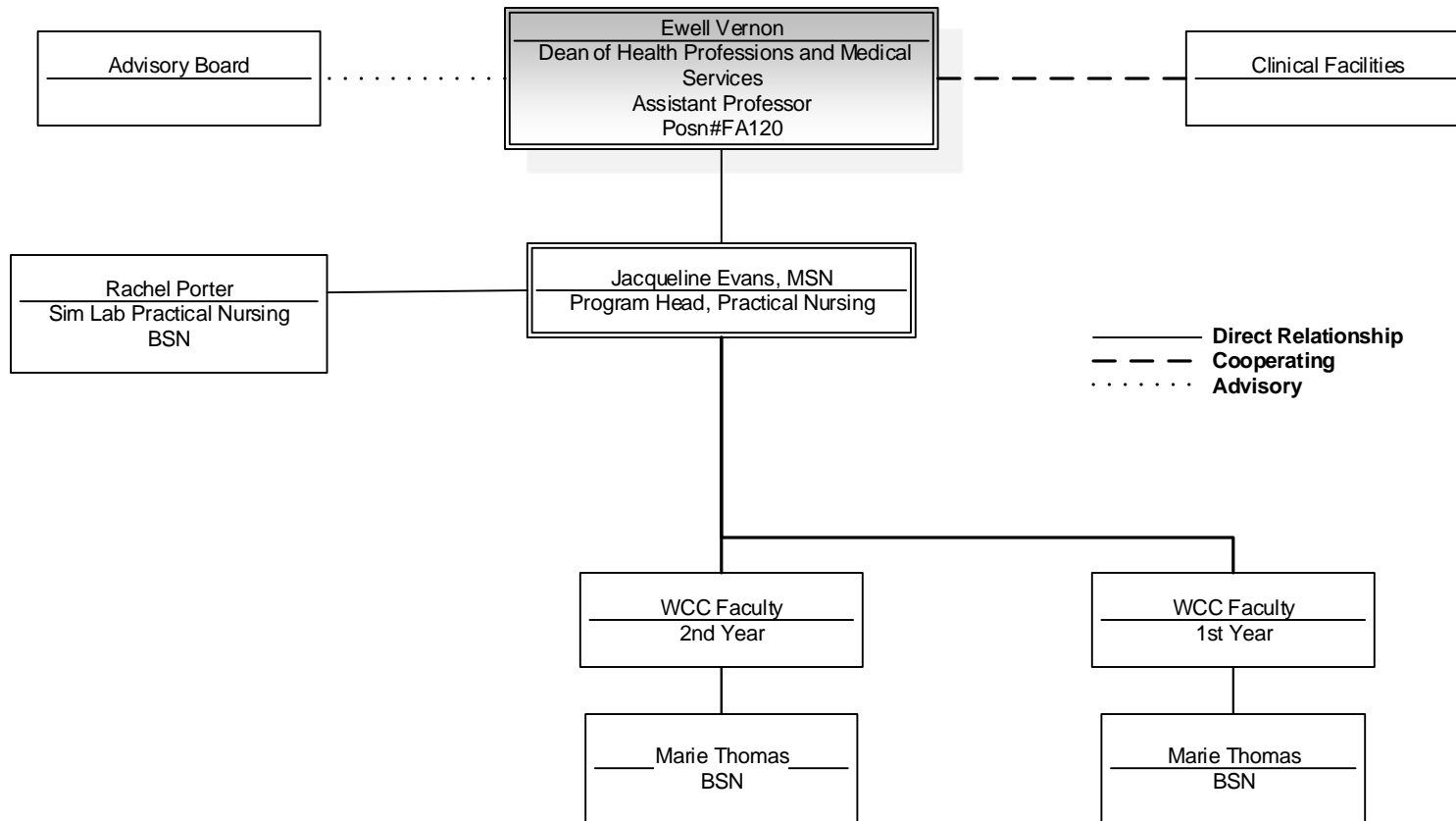


Direct Relationship —————
Cooperating - - - - -

Wytheville Community College

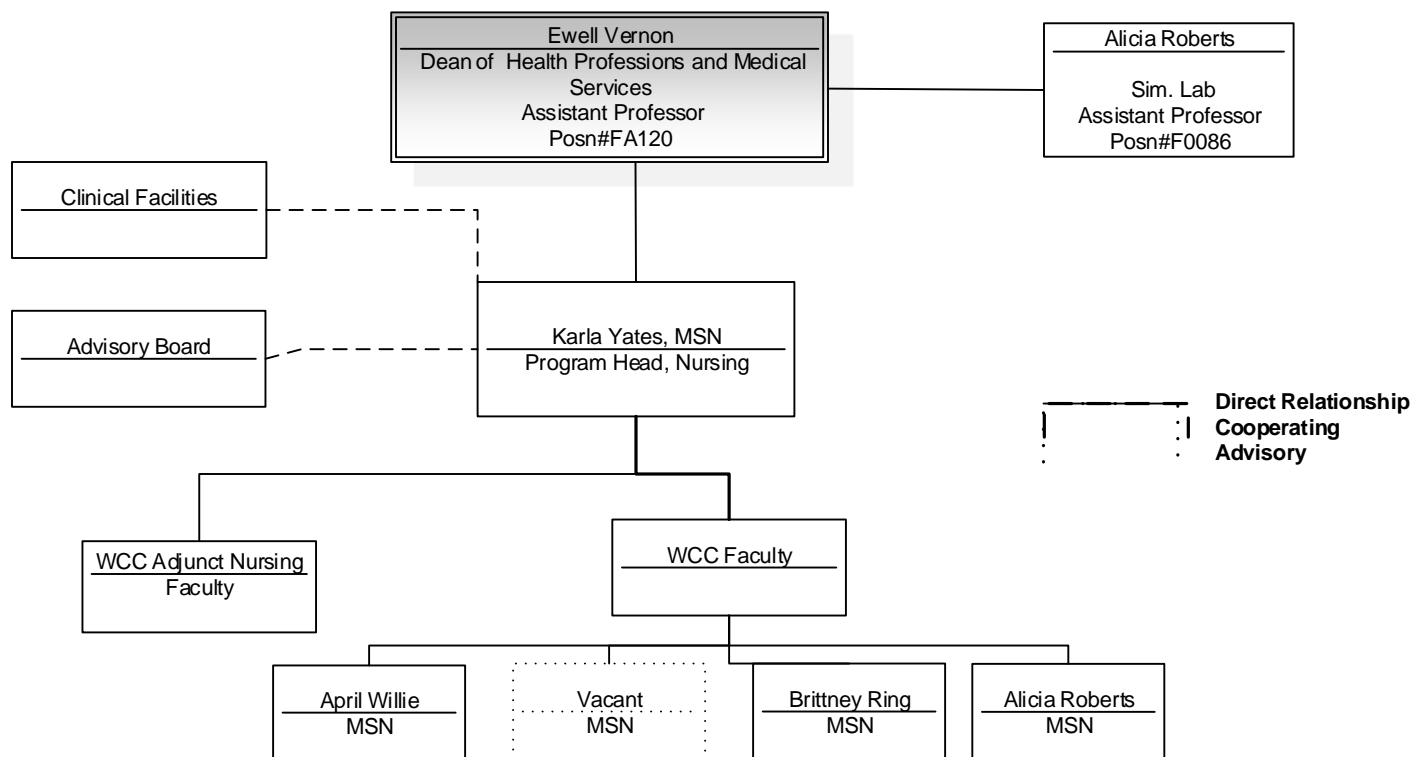
Practical Nursing Program

January 3, 2024



Wytheville Community College

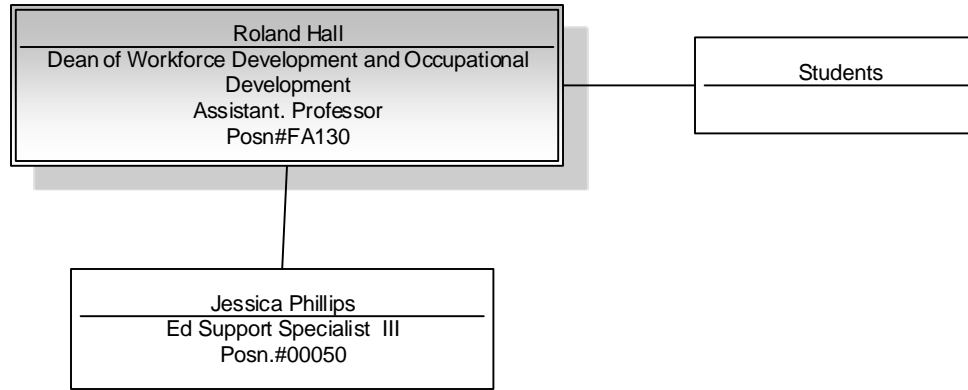
Nursing Program



Wytheville Community College

Crossroads Institute (Galax)

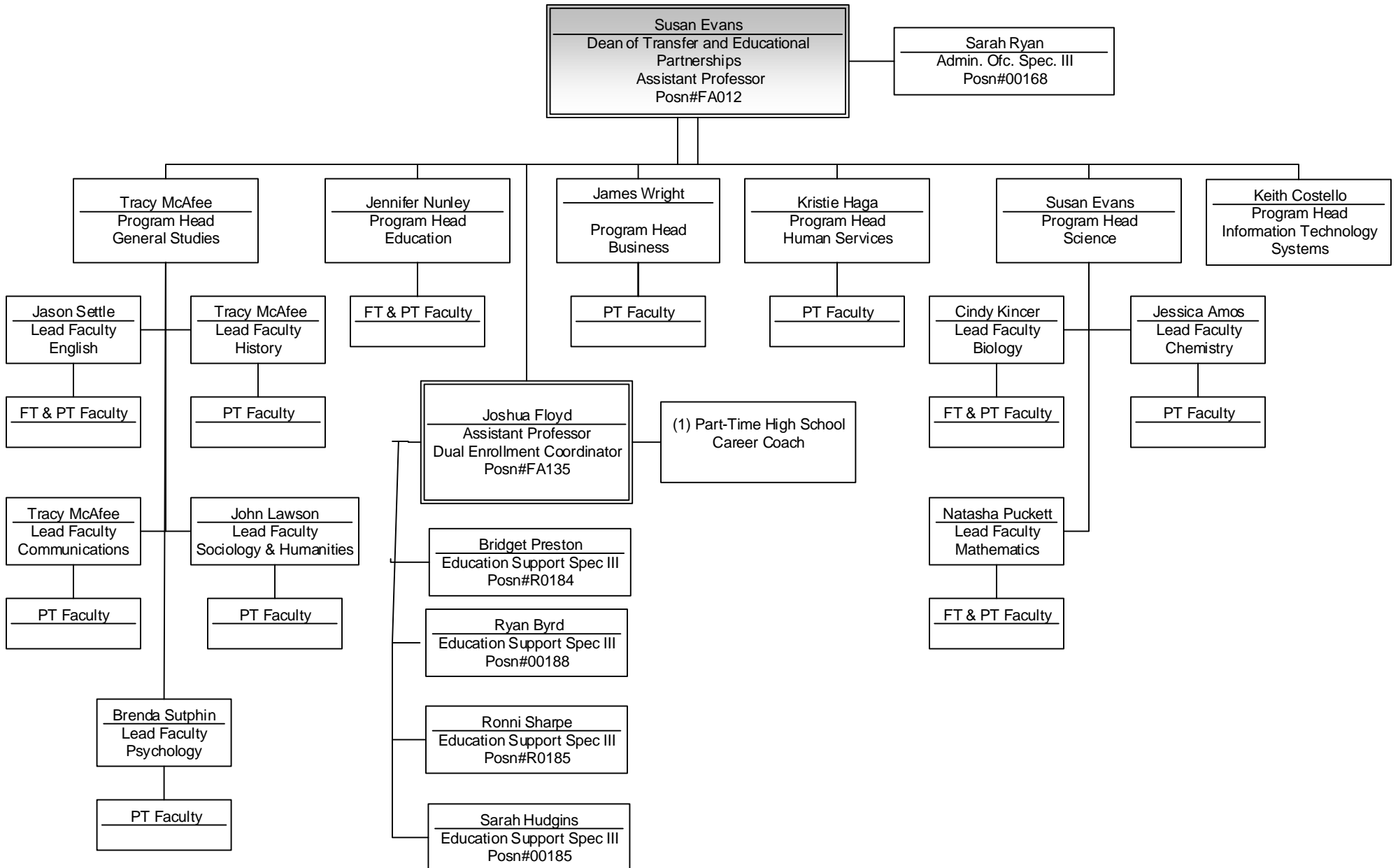
January 3, 2024



Wytheville Community College

Transfer and Educational Partnerships

January 3, 2024

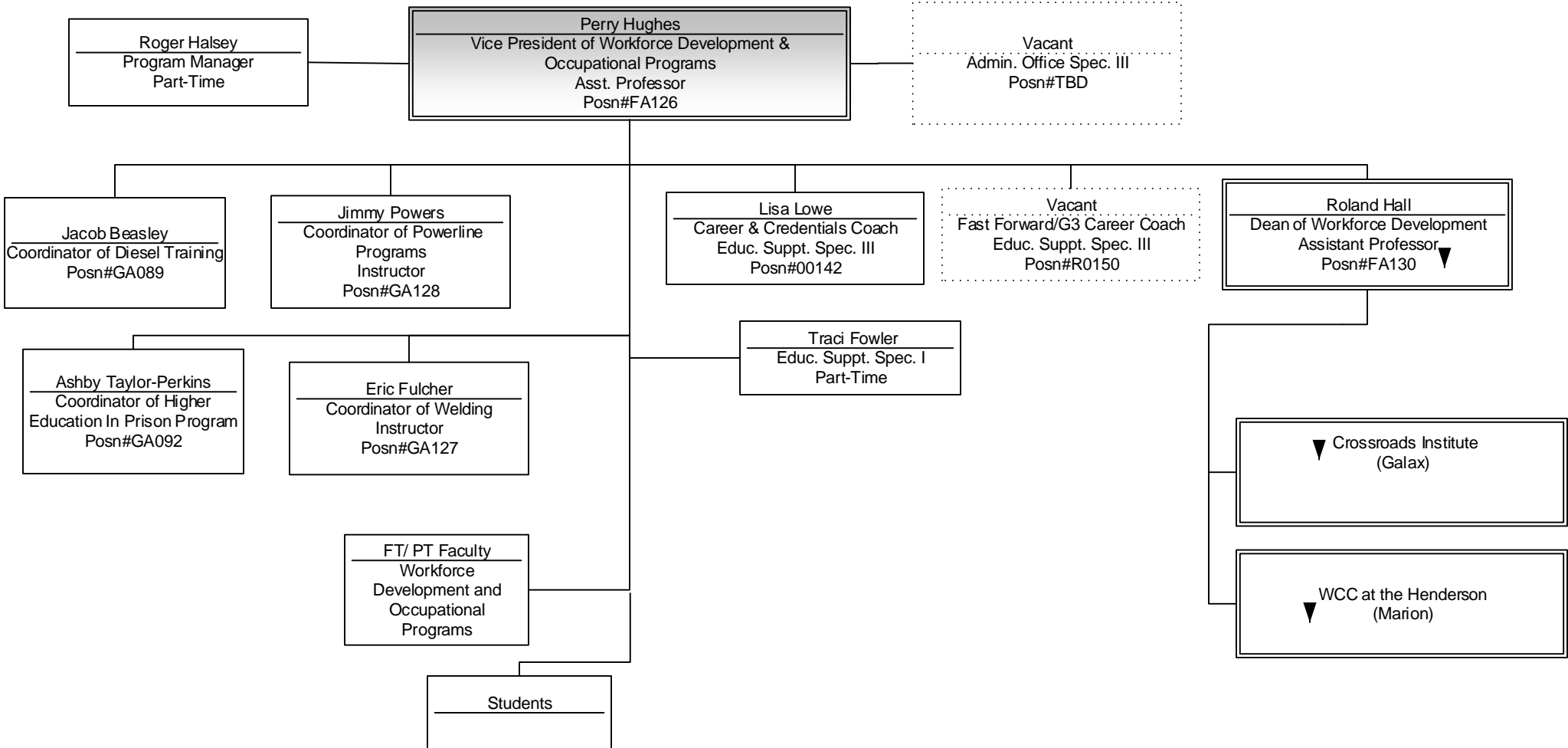


Wytheville Community College

Workforce Development and Occupational Programs

Workforce Development

January 3, 2024

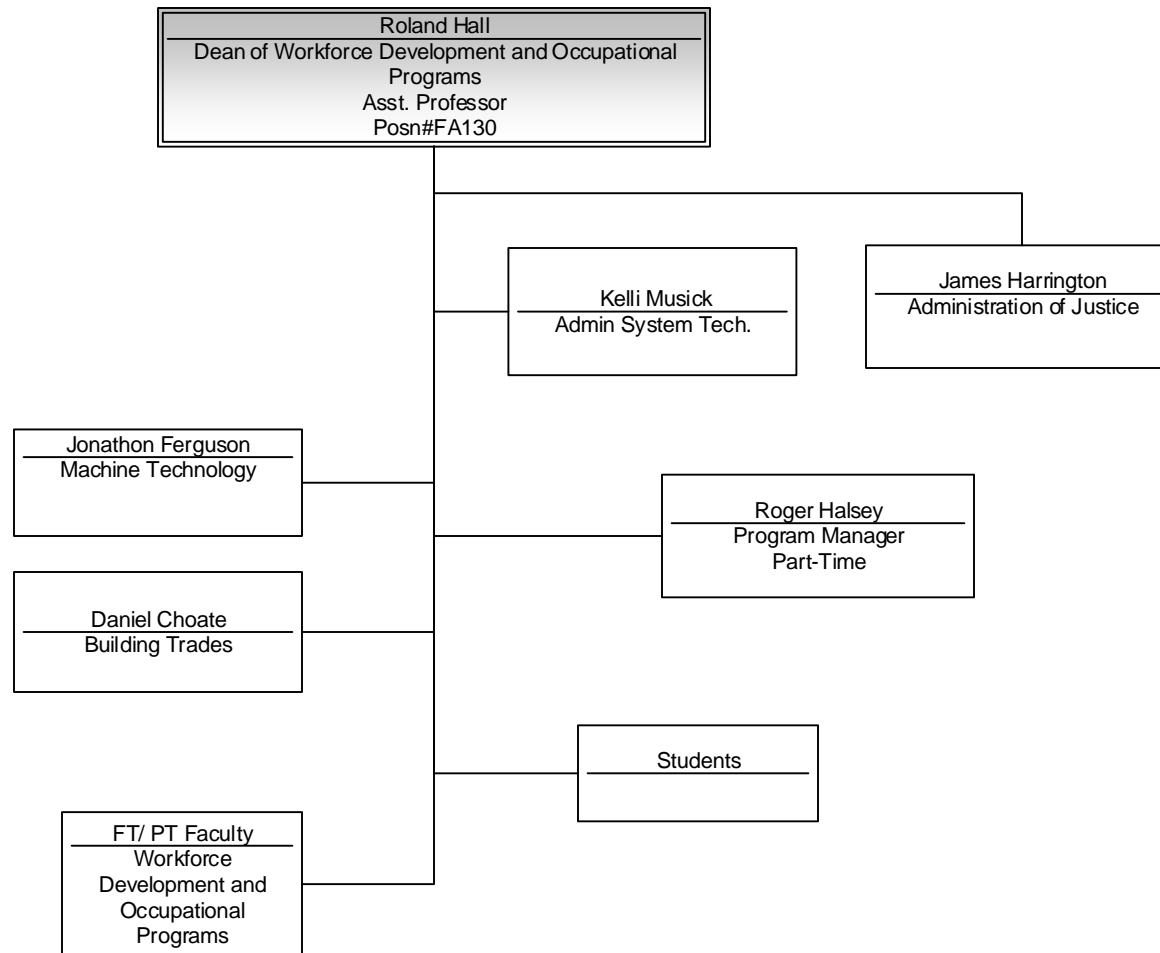


Wytheville Community College

Workforce Development and Occupational Programs

Occupational Programs

January 3, 2024



Wytheville Community College

WCC at the Henderson

January 3, 2024



Roland Hall

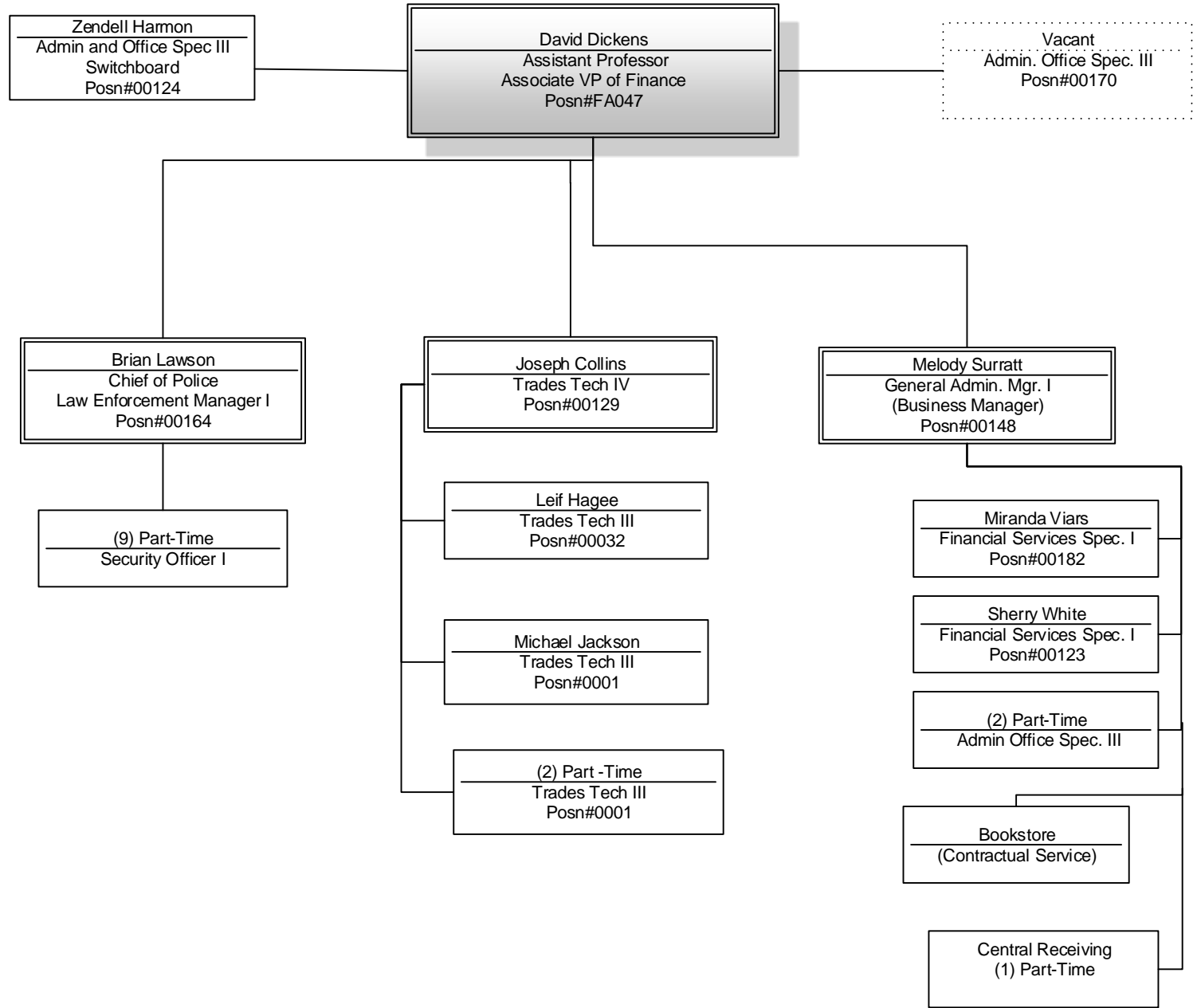
Dean of Workforce Development and Occupational Programs

Assistant Professor

Posn#FA130

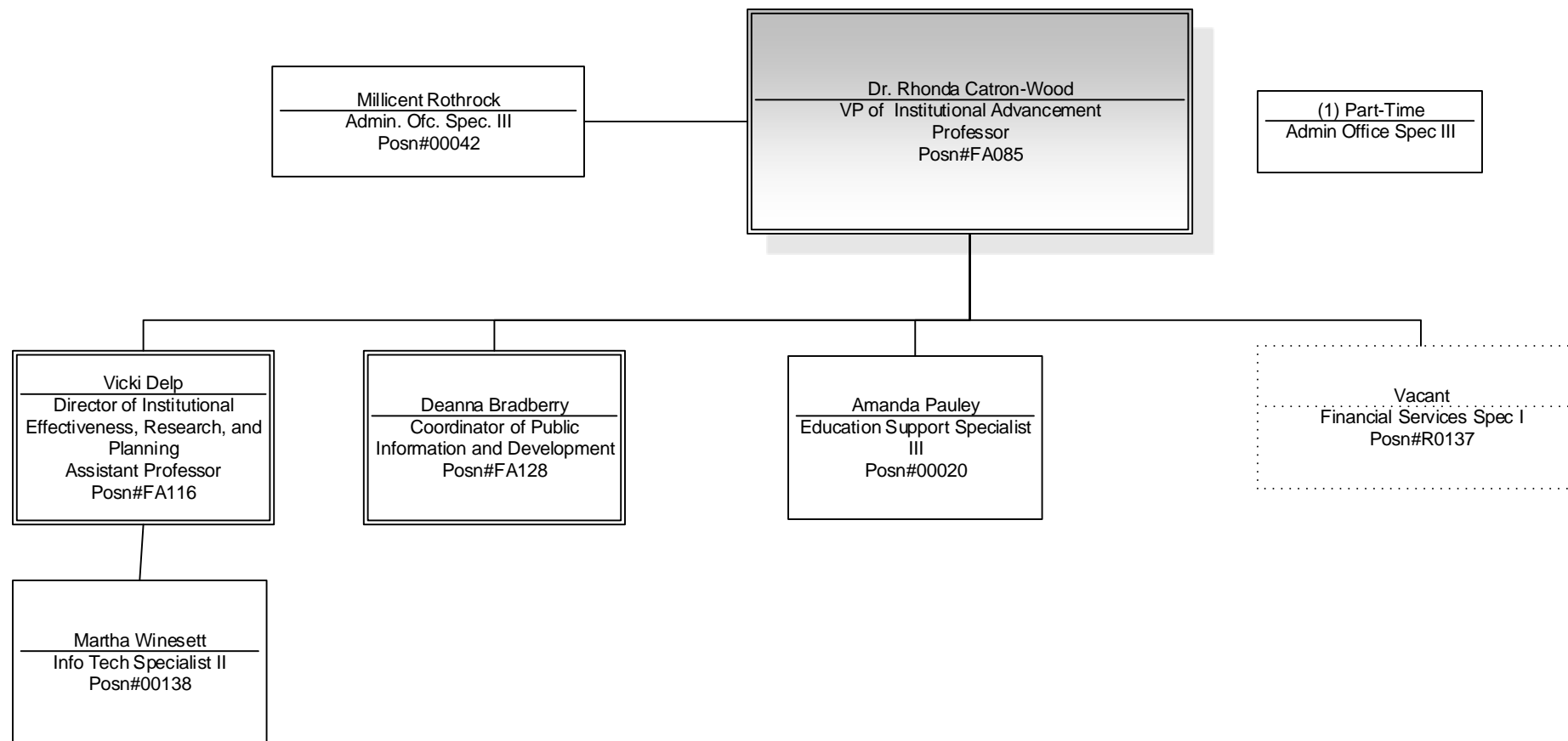
Wytheville Community College

Finance



Wytheville Community Colleg

Institutional Advancement



Wytheville Community College

Instruction

January 3, 2024

